

Welcome to our latest newsletter, bringing you up to date with events happening in the N&EMPf region in the near future.

It's that time of year when clubs are starting their new season and treasurers are hopefully breathing a sigh of relief as members come back and sign up for another season and programme secretaries are revealing what lies ahead. An exciting buzz as we return to our weekly meetings and discuss what we have been up to over the summer recess. An exciting period in the camera club world, welcome to September!

It's also an important month for N&EMPf as we have opened the entry system for our 2024 Exhibition, the 69th that the federation has held, details of which have now been sent to club secretaries or can be found on our website www.nempf.org The Exhibition is the showcase event for the federation, displaying the work of club members from across the region. It would be fantastic if all clubs within the federation were to enter the exhibition and we will endeavour to hang an image from all clubs that enter. Closing date for entries via the online entry system is Sunday 15th October.

This year also sees the introduction of another club trophy, The Gibbins Trophy, so now there will be two club trophies in the print section and two in the PDI section!

The exhibition will be on display at Patchings Art Centre from 6th January to 18th February 2024 but also, for the first time, we will be displaying some of the images in Lincoln Library from 26th February to 9th March 2024, a great opportunity to widen the reach of the exhibition.

CALL FOR ENTRIES



The entry system is now open for the
2024 N&EMPf Exhibition

Get your entries in by Sunday 15th
October

Patchings Art Centre is also the venue for two very prestigious exhibitions coming to the region this autumn. The London Salon of Photography from 26th August to 1st October and then the Masters of Print Exhibition from 7th October to 19th November.



Both of these exhibitions are not to be missed and where some stunning work will be on display.

The Masters of Print Exhibition will have an official opening at 2pm on Saturday 7th October to which you are all welcome to attend.

Patchings Art Centre is open 10am to 4pm Wednesday to Sunday.

October sees the annual N&EMPf Memorial Lecture, held at the Duchess Theatre in Long Eaton, on Friday 13th October, the lecture is free to all N&EMPf club members. This year our guest speaker is Tony Worobiec with his latest lecture *The Waters Edge*, a celebration of the British coast.

Tony is an award-winning photographer, author of 17 books, and has had work exhibited in London's Barbican Gallery, Bradford's National Museum of Photography, The Menier Gallery London and The Fox Talbot Museum Lacock. Dozens of his photographs have been used for book or album covers so make a date in your diaries and come along and see this excellent talk.



2023 MEMORIAL LECTURE

An evening with award winning
Photographer and Author

TONY WOROBIEC FRPS



**ENTRY TO THIS LECTURE IS FREE
FOR ALL MEMBERS OF N&EMPf CLUBS**

Friday, 13th October 2023 at 7.30 pm
at the Duchess Theatre, Chatsworth Arts Centre,
Westgate, Long Eaton, NG10 1EF

The Memorial Lecture is sponsored by "The Dennis Shipman Bequest"

For more information visit: www.nempf.org

Another important date for the federation is Saturday 25th November as N&EMPf host the PAGB Awards for Photographic Merit - print adjudication. For the first time the new B – Badge, and E – Excellence, levels will be adjudicated, meaning all 5 levels will be assessed, so there is sure to be plenty of excellent prints to see. Please come along and see this event being held at the Jubilee Conference Centre, Nottingham.

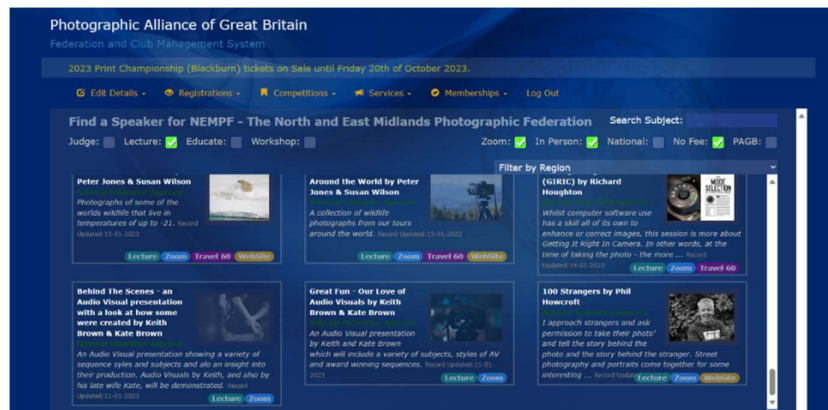
On Sunday 26th November the PDI adjudication will take place at Smethwick Photographic Society club room at Oldbury near Birmingham.

Tickets will be made available for each event and entrance to each event will be by pre-bought ticket only.



The latest N&EMPf Directory will shortly be sent out to all clubs, updating information about our clubs and our Judges and Lecturers.

The PAGB Handbook will no longer be in print format, with details being transferred onto the PAGB CES (Central Entries System). Details on how to use this are being finalised and will be issued out to club secretaries when completed, an example screenshot is below.



If You Haven't Made the Input, Can you Claim the Output?

Artificial Intelligence is beginning to make a stir in the photographic world, what impact is it going to have on photographers and what impact will it have on photographic competitions. The PAGB have produced a discussion document about this, which some of you may have picked up from their e-news bulletins, but it has been circulated with this newsletter for those that haven't yet seen it.

Currently the position of N&EMPf, for its competitions, is included within the rules for our 2024 exhibition and reads as follows:

- **The original image/images must have been taken using a photographic process and all elements must have been photographed or created by the member.**
- **No modifications are allowed based on AI generated text input or generated using images or elements not taken by the photographer.**

In response to the PAGB discussion document the N&EMPf Executive Committee are pulling together a sub group of members to review this document and provide feedback for the federation.

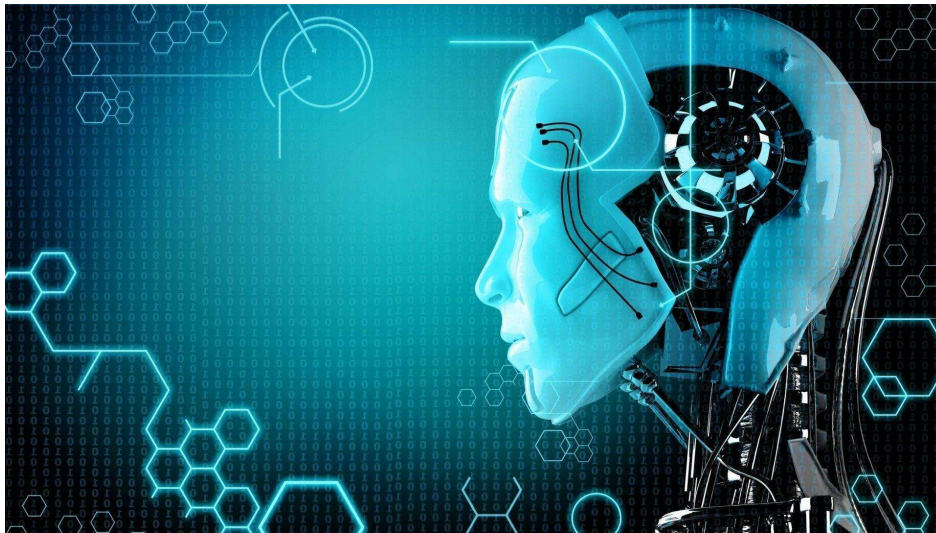


Image courtesy of wallpaperaccess.com

That's it for this Newsletter, if you have any contributions you would like to make for further newsletters, please email us @ newsletter.editor@nempf.org

Steve Walters

Vice President and Interim Newsletter Editor